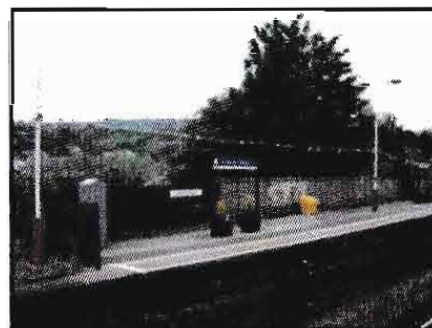


Steady progress through spring...

The Group has continued its efforts during the first part of the year to improve the station and its surroundings. A big success has been the much needed roof repairs to platform 2 which have been undertaken, and, despite the continued wet weather, our members continue to dedicate their time to tending the flower tubs and planters that have been sponsored by a number of local firms.

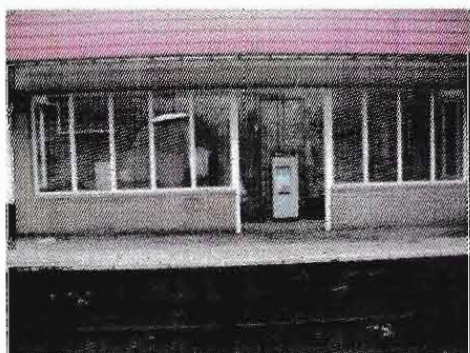
For the Queen's Diamond Jubilee, the group decorated both platforms with commemorative bunting. We've been informed that our station was the only one on either the Calder Valley or Colne Valley lines to mark the occasion and many favourable comments have been fed back by station users.



If you would like to share any feedback, we'd welcome your views, please email us at fofsbrs@gmail.com. Or, if you would like to find out how you can get involved with our Group, please call me on 07850 822590. Thank you.

Christopher J Wright, Convenor (FofSBRS)

Station improvements update...



Roof Repairs to platform 2 have now been completed. Missing roof panels over the waiting area were replaced by Northern Rail during w/c 22 May. However, one panel has become dislodged and this has been reported so hopefully will be fixed shortly to make the shelter watertight. At the same time, the white lines along the platform edge have been repainted by Northern.

New Platform Seating...

Nothing further to update on the new platform seating offered by local firm, **WP Eglin**. We will update on progress in the next newsletter.

Recent Steam Engine movements...

On Sunday 3rd June, 4-6-2 No. 6233 “Duchess of Sutherland” passed through the station (with support coach) en-route from York to Crewe.



On the previous Friday, 4-6-2 No. 60163 “Tornado” was observed being hauled by a silver-liveried, named, Class 67 diesel, heading in the opposite direction.

Station Planter Sponsorship...



A further two local firms have volunteered to sponsor our station planters – thanks to **Ye Olde Oak Foods** and **Trinkette** both of Sowerby Bridge.

This brings the total to **seven** local firms supporting the Group – a positive start .

The spring bedding for these planters has been completed and we’ll be tending these throughout the year to improve the passenger experience at the station.

We still have a number of planters available if any other local organisations would like to support our group and help to improve the station. We have large half barrel planters at £150; Rectangular planters and hanging baskets at £100; and semi-circular fence planters at £50. Please contact John Hartley (jhagardener@googlemail.com) if you would be interested to find out more.

Did you know?....

.... Rare railway and bus tickets (even local ones!) are very collectable and can change hands for large sums of money. A 3d LM&SR “Omibus Services” ticket (from the 1930s) was sold for £104.50 at an auction in London on 21 April 2012. This was a named-stage punch type ticket – the fare stages being shown as Halifax Old Station, Halifax Centre, King Cross, Willow Gardens, Bolton Brow School, Wharf Street, Royal Hotel, Triangle, Denton Bridge, Kebroyd, Ripponden, White Hart and Gig Mill.

Do you have interesting facts about Sowerby Bridge Railway Station?

We’d love to hear from you..... Please email fofsbrs@gmail.com with your stories.

Fundraising update...

Sponsored haircut – Group member John Hartley , along with Jubilee Refreshment Rooms' Josh Morley and Andrew Wright, lost their locks in a sponsored haircut in aid of the Group and also the Forget-me-not Childrens' Hospice. The trio raised a respectable £363.70 in total. Thanks to Joanne Sheldon (**JMS Hair, 6 West Street**) for giving up her time to trim the tresses.

Community First Neighbourhood Grant – The local Community First Panel has made formal recommendation to the Community Development Foundation in London that the Friends of Sowerby Bridge Railway Station be awarded grant funding to cover further improvements involving the station and its surrounding area. We are awaiting official confirmation and will give further update in the next newsletter.

This grant could support one of our initiatives to create a 'Bronte' garden in the grounds of the station - to recreate a garden similar to as it was in the 1950s and 1960s. We've just also secured £150 funding from ACoRP which is great news for the Group and will be used to buy totems showcasing our Yorkshire in Bloom success , for all to see.

Coach trip to Lakeside & Haverthwaite ...

The Group are organising a coach trip from Sowerby Bridge to Lakeside & Haverthwaite railway on **Tuesday 14 August**.

This trip is open to all – not just members ,so if you'd like to join us and take the opportunity to ride on the preserved L&H railway, and enjoy a cruise on Lake Windermere in the picturesque southern Lake District then just contact:

jim.milner@tiscali.co.uk or call into the **Jubilee Refreshment Rooms on the station**

Tickets are £15 per person and this includes transfer by coach from the station at 9am and return at around 6pm . L&H rail ticket and boat tickets are extra. **A £10 deposit secures your place (payable by 20th July)**

We hope you'll join us for what should be a memorable day in the Lake District



Calendar of Events

The following are our upcoming events and **ALL** are welcome.

Work Together Days will vary and may involve weeding, tidying up the station, planting or watering the flower boxes etc. Meeting place is the Jubilee Refreshment Rooms at the Station – just ask for Chris.

Open ‘Committee’ Meetings are held once per month and the agenda includes: Updates from the Convenor, Secretary, Treasurer and group discussions about relevant topics such as upcoming events or ideas.

Date	Event
Mid July	Yorkshire in Bloom judging day at the station from 10.00am
Sat 27 July	Work Together session – 9am-12noon – meet at the Jubilee Refreshment Rooms.
Tues 14 Aug	Open ‘Committee Meeting’. Starts 7.30pm at the Jubilee Refreshment Rooms.
Sat 18 Aug	Work Together session – 9am-12noon – meet at the Jubilee Refreshment Rooms.
Tue 11 Sept	Open ‘Committee Meeting’. Starts 7.30pm at the Jubilee Refreshment Rooms
Sat 15 th Sept	Work Together session – 9am-12noon – meet at the Jubilee Refreshment Rooms.

Acknowledgements

THANKS..... to **Northern Rail, Metro, Linda Riordan** (MP Halifax) and **David Draycott** (Councillor Sowerby Bridge Ward) for driving forward key improvements now in place at the station.; **SimPrint**, Sowerby Bridge, for the discounted printing of this newsletter (craig@simprint.fsnet.co.uk); **Kevin Turville** (Trustee & Digitisation Project Officer of the Lancashire & Yorkshire Railway Society) for supplying numerous old photographs and plans of Sowerby Bridge railway station; **Joanne Sheldon** of JMS Hair, West Street for supporting our sponsored hair cut; **Ye olde Oak Foods Ltd & Trinkette** of Sowerby Bridge for sponsorship of our planters. And finally, to everyone over recent weeks who has donated books, DVDs and photographs to the ‘Friends’ library (housed at the Jubilee Refreshment Rooms) with access for all.